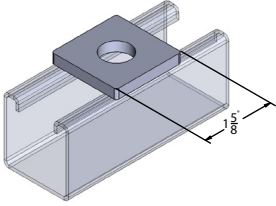


9001FF

square strut washer

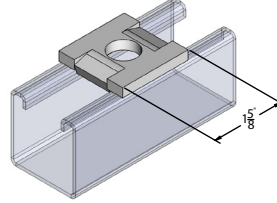


Materials/ Finishes:	Zinc Plated (9001FFZ)
	T-304 Stainless (9001FFSS)
	T-316 Stainless (9001FFSX)
Thickness:	1/4"
Hole Dim:	9/16"

ROD SIZE	WGT EACH (lbs)
1/4	0.18
3/8	0.18
1/2	0.17
5/8	0.16
3/4	0.16
7/8	0.15

9002FF

square strut washer w/ guides

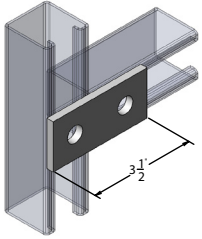


Materials/ Finishes:	Zinc Plated (9002FFZ)
	T-304 Stainless (9002FFSS)
	T-316 Stainless (9002FFSX)
Thickness:	1/4"
Hole Dim:	9/16"

ROD SIZE	WGT EACH (lbs)
1/4	0.18
3/8	0.18
1/2	0.17
5/8	0.16
3/4	0.16

9003FF

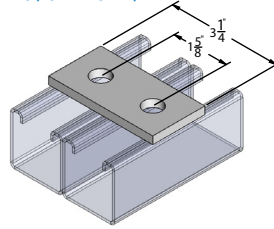
2-hole splice plate
1-5/8" x 3-1/2"



Materials/ Finishes:	Zinc Plated (9003FFZ)
	T-304 Stainless (9003FFSS)
	T-316 Stainless (9003FFSX)
Thickness:	1/4"
Hole Dim:	9/16"
Wgt. each (lbs)	.37

9004FF

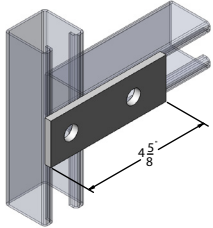
2-hole splice plate
side to side strut
1-5/8" x 3-1/4"



Materials/ Finishes:	Zinc Plated (9004FFZ)
	T-304 Stainless (9004FFSS)
	T-316 Stainless (9004FFSX)
Thickness:	1/4"
Hole Dim:	9/16"
Wgt. each (lbs)	.34

9005FF

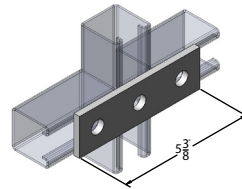
2-hole splice plate
1-5/8" x 4-5/8"



Materials/ Finishes:	Zinc Plated (9005FFZ)
	T-304 Stainless (9005FFSS)
	T-316 Stainless (9005FFSX)
Thickness:	1/4"
Hole Dim:	9/16"
Wgt. each (lbs)	.46

9006FF

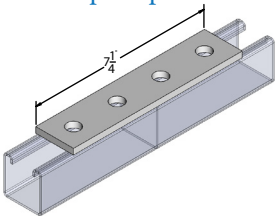
3-hole splice plate
1-5/8" x 5-3/8"



Materials/ Finishes:	Zinc Plated (9006FFZ)
	T-304 Stainless (9006FFSS)
	T-316 Stainless (9006FFSX)
Thickness:	1/4"
Hole Dim:	9/16"
Wgt. each (lbs)	.55

9007FF

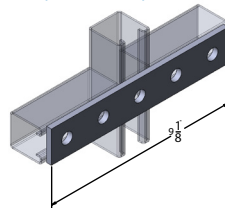
4-hole splice plate



Materials/ Finishes:	Zinc Plated (9007FFZ)
	T-304 Stainless (9007FFSS)
	T-316 Stainless (9007FFSX)
Thickness:	1/4"
Hole Dim:	9/16"
Wgt. each (lbs)	.76

9008FF

5-hole splice plate
1-5/8" x 9-1/8"



Materials/ Finishes:	Zinc Plated (9008FFZ)
	T-304 Stainless (9008FFSS)
	T-316 Stainless (9008FFSX)
Thickness:	1/4"
Hole Dim:	9/16"
Wgt. each (lbs)	.95

PROJECT INFORMATION			APPROVAL STAMP
Project:			Notes:
Address:			
Contractor:			
Engineer:			
Date:			
Approved	Approved as Noted	Not Approved	